

Pinnacle Introduces . . . **PinPoint** Web-based Information Management

"Pinnacle's approach to serving the renewable fuels industry is straightforward", says Jim Holland, Pinnacle's CEO. "Freeing our clients to focus on production allows for the best use of their resources." This philosophy has lead Pinnacle to develop a recordkeeping and reporting system that captures the day-to-day requirements of tracking and managing your compliance data.

PinPoint is a web-based information management tool that allows for user interaction, and timely data access and reporting. Multiple facilities or projects can be combined to form one website of shared information. Client sites are customized to meet their unique needs with the flexibility to encompass everything from historical data and reports to project scheduling. Pinnacle clients simply log into their own PinPoint website to review new data, access reports, and manage projects. PinPoint also serves as a communications forum for breaking news in the client's industry, questions and answers, and a wide variety of additional information.

Contact Jim Holland or John Gleason for additional information or to request an in-house demonstration—763-315-4501.



CEO's Corner **2005 in Review** By Jim Holland, President/CEO

2005 was an incredible year for growth in Pinnacle Engineering. It seemed in 2005 that many of the plans we have lain over the past three years came to fruition.

Pinnacle's Brownfield's practice had an excellent year in 2005. We had a success rate of 100% on projects Pinnacle brought forth to the state funding mechanisms. As an example, we are currently working on a re-development project that will involve placement of a School Bus Depot facility on a closed landfill. This will be one of the first, if not the first develop-

ment to take place on a closed landfill in Minnesota if the project reaches fruition. This project has received favorable response from the client, MPCA, Hennepin County, Met Council and DEED.

On the Industrial side of Pinnacle, 2005 brought very significant and continuing expansion of our presence in the renewable fuels market. Pinnacle picked up several additional ethanol plants in 2005. Services provided to the clients have grown dramatically. Most notably, Pinnacle has made a strong name for ourselves as a full service provider of Air Quality services to this market. We look to 2006 as a very significant year in this market sector. Our reputa-

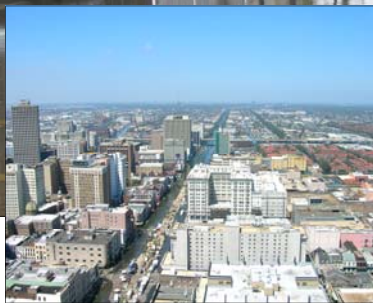
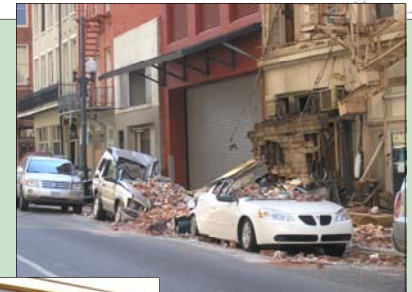
tion for high quality engineering services at reasonable fees prompted many potential clients to seek us out in the marketplace.

As we look to 2006, we see endless opportunities to strengthen our presence in virtually all of our core service areas. We have spent a lot of internal effort making sure that our client services capabilities keep pace with our technical services growth. I am personally spending most of my time with clients and their associated Pinnacle client managers making sure that the clients needs are understood and met to the best of our abilities.

(Continued on page 6)

Katrina Disaster Requires a Host of Environmental Relief Services

Pinnacle staff called on to assist with microbial testing and moisture assessment in a number of facilities owned by a national hotel management corporation.



Downtown New Orleans just 2 weeks after the devastating hurricane launched havoc within the city.

Eleven-days after the devastating Hurricane Katrina on August 29, 2005, Pinnacle Engineering was on the ground in New Orleans, Louisiana.

Our mission was to help establish a foothold for the thousands of reconstruction workers returning to the city. Pinnacle provided mold remediation services for a national hotel management group for fifteen storm-damaged properties, assisting in the reactivation of over 1,500 hotel rooms. Water damage occurred from actual storm damage, failed HVAC systems, levy breaks, and infrastructure (sewer system) backup.

Pinnacle assessed the hotels, room-by-room, providing photo documentation, air, water and bulk samples, and moisture evaluations. Pinnacle staff wrote remediation plans and implemented those plans with contractors; Pinnacle directed the contractor remediation efforts; and obtained air, water and bulk samples upon the completion of those efforts.

All of us at Pinnacle are proud of our services to New Orleans and our continuing projects there and in the state of Louisiana.

For more details please contact John Landwehr at (763) 315-4501.



Mold assessment and remediation activities were conducted on a room-by-room basis.

Florida Properties Suffer Similar Setbacks

Along with their New Orleans properties, Pinnacle assisted the hotel management group with moisture surveys and assessments on their lodging properties in Florida as well. Similar remediation efforts were completed on these sites.



Pinnacle Expands Staff to Substantiate Continued Growth

Pinnacle continues to expand their environmental and industrial groups in the areas of business development, environmental project management, and environmental support. We welcome John, Tim and Matt, and offer the following information to help you become acquainted with their roles within the company.

John Gleason—Business Development, Maple Grove Office

John joined Pinnacle's staff in June of 2005 as Manager of Business Development. John brings to Pinnacle almost 30-years of experience in the areas of environmental compliance, field monitoring and testing, quality assurance, and electronic information systems. As Pinnacle explores the various avenues of John's expertise, many opportunities exist for our clients. John's experience in emissions monitoring and compliance testing compliments Pinnacle's growth in serving the renewable fuels industry.

John's focus will be to determine areas within your operation in which Pinnacle's support will provide increased efficiencies. With John on staff, Pinnacle is looking to offer our clients increased efficiencies with data and information management (see related PinPoint article). As a past owner of an environmental business, John shares Pinnacle's view on the importance of quality service. We are excited to have John on board as Pinnacle works on the development and implementation of new programs. John can be reached at our Maple Grove office at 763-315-4501.

Tim Modjeski, PG—Environmental Project Management, Rochester Office

Coming to Pinnacle in December from Bonestroo and Associates (a large regional civil municipal engineering firm), Tim will serve as the lead contact for Pinnacle's Rochester based environmental clientele. As a Senior Project Manager/Professional Geologist, Tim's primary role will be client development, project management and technical review.

For the past 18 years Tim has worked with a variety of public and private sector clients on projects ranging from Phase I/II investigations, Watershed Management Studies to Aquifer Testing and Wellhead Protection Plans. In the upcoming weeks, Tim will be contacting clients to introduce himself, and the services Pinnacle Engineering provides.

Matt Witzel—Environmental Support Staff, Maple Grove Office

Matt started with Pinnacle last November as an Environmental Scientist. He will be working in our Maple Grove environmental group assisting with field testing, data collection and documentation. Matt received his Bachelor of Science degree at St. Cloud State University and has spent the last two years working in the environmental consulting field while attending college.



John Gleason
Jgleason@pineng.com
Ph. 763-315-4501



Tim Modjeski
Tim@pineng.com
Ph. 507-280-5966



Matt Witzel
Mwitzel@pineng.com
Ph. 763-315-4501



Upcoming Tradeshows & Conferences

- 2006 MPCA Air, Water and Waste Environmental Conference February 14-16, 2006 in Bloomington, MN
- 2006 Fuel Ethanol Workshop & Expo—June 20-23, 2006, Midwest Airlines Center, in Milwaukee, WI. Visit our booth. See vendor and workshop information at the web site www.fuelethanolworkshop.com.
- 2006 AEC Ethanol Conference & Tradeshow—August 8-10, 2006 in Kansas City, MO



TWIN CITIES OPERATIONS

11541 95th Avenue North
Maple Grove, Minnesota 55369
Phone: 763-315-4501 Fax: 763-315-4507

Key Contacts:

Jim Holland—Jholland@pineng.com
Eric Hansen—Ehansen@pineng.com
Larry Sibik—Lsibik@pineng.com

ROCHESTER OPERATIONS:

7389 Airport View Drive SW, Ste. 400
Rochester, Minnesota 55902
Phone: 507-280-5966 Fax: 507-280-5984

Key Contact:

Steve Schleicher—Steve@pineng.com (new)
Tim Modjeski—Tim@pineng.com

LA CROSSE, WI OPERATIONS:

115 5th Avenue South
La Crosse, Wisconsin 54601
Phone: 608-784-9001 Fax: 608-784-9002

Key Contact:

Karl Zenk—Kzenk@pineng.com

Jan.—Aug. 2006 Regulatory Deadlines* at-a-Glance

January 2006							February 2006							March 2006							April 2006						
Su	Mo	Tu	We	Th	Fri	Sat	Su	Mo	Tu	We	Th	Fri	Sat	Su	Mo	Tu	We	Th	Fri	Sat	Su	Mo	Tu	We	Th	Fri	Sat
1	2	3	4	5	6	7				1	2	3	4				1	2	3	4							1
8	9	10	11	12	13	14	5	6	7	8	9	10	11	5	6	7	8	9	10	11	2	3	4	5	6	7	8
15	16	17	18	19	20	21	12	13	14	15	16	17	18	12	13	14	15	16	17	18	9	10	11	12	13	14	15
22	23	24	25	26	27	28	19	20	21	22	23	24	25	19	20	21	22	23	24	25	16	17	18	19	20	21	22
29	30	31					26	27	28					26	27	28	29	30	31		23/30	24	25	26	27	28	29

May 2006							June 2006							July 2006							August 2006						
Su	Mo	Tu	We	Th	Fri	Sat	Su	Mo	Tu	We	Th	Fri	Sat	Su	Mo	Tu	We	Th	Fri	Sat	Su	Mo	Tu	We	Th	Fri	Sat
	1	2	3	4	5	6					1	2	3							1			1	2	3	4	5
7	8	9	10	11	12	13	4	5	6	7	8	9	10	2	3	4	5	6	7	8	6	7	8	9	10	11	12
14	15	16	17	18	19	20	11	12	13	14	15	16	17	9	10	11	12	13	14	15	13	14	15	16	17	18	19
21	22	23	24	25	26	27	18	19	20	21	22	23	24	16	17	18	19	20	21	22	20	21	22	23	24	25	26
28	29	30	31				25	26	27	28	29	30		23/30	24/31	25	26	27	28	29	27	28	29	30	31		

January — August 2006 Minnesota Regulatory Deadlines*

January—2006	February—2006
<p>Jan. 1—P2 Plan Update</p> <p>Jan. 30—Air Emissions Deviation Report, and Air Emissions Annual Certification</p> <p>Jan. 31—MCES Industrial Wastewater Report, Hazardous Waste Annual Report, and Hazardous Waste License Application (MN Metro Area)</p>	<p>Feb. 01—OSHA 300 Log Posting Deadline</p> <p>Feb. 04—Hazardous Waste Annual Report and Hazardous Waste License Application (Greater MN: date subject to change)</p>
March—2006	April—2006
<p>Mar. 01—EPA Pesticide Report, and MN Pesticide Report for Sales in MN, and EPA Biennial Hazardous Waste Report (Large Quantity Generators), and Tier II Chemical Inventory Report</p> <p>Mar. 31—Storm Water Pollution Prevention Plan Annual Report</p>	<p>Apr. 01—Air Emissions Inventory Report (all Air Permit holders)</p> <p>Apr. 15—Hazardous Waste Generator Tax</p> <p>Apr. 24—Hennepin County Grant Program Deadline</p> <p>Apr. 30—OSHA 300 Log Removed from Posting</p>
May and June—2006	July and August—2006
<p>May 01—Metropolitan Council Brownfield Grant Application deadline, and MN DEED Grant Application deadline</p> <p>June 30—MCES Industrial Wastewater Sampling, (Metro area semi-annual reporters), and USDOT Hazardous Materials Federal Registration (State registration follows Federal approval)</p>	<p>July 1—TRI (Form R/A) Reporting and Pollution Prevention Progress Report (Form R reporters)</p> <p>July 30—Air Emissions Deviation Report (State and Federal permit holders)</p> <p>July 31—MCES Industrial Wastewater Report (Metro area semi-annual reporters)</p> <p>August—No Regulatory Deadlines</p>

DISCLAIMER: There may be additional regulation deadlines that are not listed on this calendar. Review your specific applications and reports to determine special requirements and due dates. *Subject to change based on government regulator posted deadlines specific to report.

Cellular Communication Client Taps a Wide Variety of Pinnacle Services

Pinnacle’s long-time relationship with one of the nations’ largest cellular telecommunications companies has proven that constructing a cell tower is more than just finding the right place for it. Based on a number of factors, location of a cell tower, at times, is much more complicated than that.

Over the last 10 years, Pinnacle has assisted with hundreds of tower placement projects throughout Minnesota and Wisconsin. The process of erecting a tower in just the right location involves a number of environmental services, communication with a number of state and federal agencies, as well as working with a wide variety of people.

For a specific tower location, generally a **Phase I Site Assessment** is completed, along with a **historical review**, a **threatened and endangered species review**, and a **NEPA report**. In addition, a **geotechnical exploration** is completed to determine soil bearing capacities necessary for tower construction, including **ground resistivity testing** and **radio frequency radiation modeling** used to meet compliance requirements. Completion of the proper reports and filing of the required permits puts Pinnacle’s engineers in contact with personnel from the *MPCA*, the *MPCA VIC Program*, *Native American Indian Tribes*, *US Fish and Wildlife Department*, local *historical societies* and a variety of *businesses*.

When environmental issues are identified on proposed tower locations, further services may then be necessary to determine the site’s suitability, such things as a Phase II site assessment; boundary survey; a Wetland Impact Determination; assistance with permitting applications; a soil and groundwater

management plan to manage contamination during tower construction; and geotechnical design.

“Knowing the players in the field is a big part of the puzzle when working to complete projects on-time and within budget,” says Jim Holland, Pinnacle’s President and CEO. “Pinnacle’s ability to provide timely answers along with our familiarity of the specific needs of the telecom industry has allowed us to remain a key player as a consultant to the industry.”

For additional information on our environmental services contact Eric Hansen or Mike Hultgren of Pinnacle’s environmental group at 763-315-4501.



Peak Industrial Services

Peak’s Projects In Progress

Peak is the industrial services arm of Pinnacle, working with our engineers to provide full-service support to our clients.

Mold Assessment/ Moisture Intrusion

Hotel Corporation, New Orleans, LA—participating with Pinnacle in the aftermath of Katrina in assisting with moisture studies for a number of property sites (see related Katrina article).

Mold and Asbestos Abatement Projects

Developers of Residential/Commercial Properties, Metro Area, MN—completed asbestos abatement for a number of properties including hazardous materials cleanup.

Protective Coatings and Restorative Services

Agriculture/Food Processing Plants, Metro area and out-state MN—performed cleanup of industrial areas. Brought walls and floors up to food-grade standards, including the application of industrial coatings to floors, silos and storage tanks.

Manufacturing Facilities—clean and restore sump areas, including the drainage and recycling of thousands of gallons of glycol.



Industrial Hygiene

Insurance Companies Eliminate Risk Assessment Service due to Costs.



In recent years, Pinnacle has experienced an expansion of industrial hygiene clientele based primarily on the needs of the changing market. Insurance providers are becoming less involved in assessing risk in the workplace.

Along with the expansion of clientele, has come the need for increased capabilities. From manufacturing to hospitals to property management and land development clients, we've gone from solely protecting manufacturing workers to the inclusion of office and residential persons. We have provided services ranging from chemical to biological to infection control, as well as assisting insurance providers with the evaluation of claims regarding toxic exposure in the workplace.

So what does this mean? It means we have had to expand our thinking as to how we look at exposure and how we handle it. "We know people are being exposed to chemical (or physical or biological) agents", says Steve Schleicher, Pinnacle's EHS Professional. "We can reduce their exposure, but is the level of exposure safe?" With the role of insurance providers becoming less, our IH services are becoming more valuable to our diverse clients. Meaning...when a worker experiences an unsafe exposure, Pinnacle can take you to the next step.

Pinnacle not only has the capabilities to test for exposure, we have a staff of chemists, industrial hygiene professionals, and design engineers to go one step further—providing solutions toward a safer workplace.

- Indoor Air Quality and Ventilation Design
- Engineering Controls
- Remediation of Biological Agents (Mold)
- Hazardous Materials Clean up
- Specification & Use of Personal Protective Equipment
- Exposure Prevention Education

For additional information on Pinnacle's Industrial Hygiene services, contact Steve Schleicher at 507-280-5966.

(Continued from page 1—2005 In Review)

For me personally, this continued growth and change is the fulfillment of a plan that began over 15 years ago. Thank you to all the clients of Pinnacle for your trust and friendship. Mostly, thank you to all Pinnacle employees for your continued hard work and support of Pinnacle's goals.



11541 95th Avenue North
Maple Grove, MN 55369

PRSRT STD
U.S. Postage Paid
Maple Grove, MN
56369
Permit No. 291

Inside this Issue:

- Project Highlights 2
Katrina Disaster Requires Environmental Services
- Pinnacle Updates 3
Staff Expansion / Tradeshow & Conferences
- Information Bulletin Board 4
Key Contacts / Regulation Calendar
- Environmental Services Review 5
- Peak Industrial Services 5
Projects In Progress